

# Le Sidi

CABANAS



# Le Sidi

CABANAS

A PROJECT BY

---



**PALM HILLS**  
DEVELOPMENTS

TLT   
LIVING



**haciendabay**  
PALM HILLS DEVELOPMENTS





**PALM HILLS**  
DEVELOPMENTS

Palm Hills Developments is a leading real estate company in the Egyptian market, primarily developing integrated residential, commercial real estate as well as resort projects. Founded in 2005 by Mansour and Maghraby Investment and Development Company [MMID], the company, which is listed on the Egyptian Stock Exchange and London Stock Exchange, traded under the symbols “PHDC.CA” and “PHDC.LI” respectively, was the result of a vision to create self-sufficient and well-integrated communities. Presently, Palm Hills Developments possesses one of the largest land banks in the country and is rapidly growing into a regional player, thanks to a geographically diversified land bank suitable for the development of a broad range of real estate products all fashioned to cater for customers’ need gaps and preferences. Currently, Palm Hills Developments has a portfolio of 30 projects spanning different development stages nationwide, and spreading over 27 million square meters in Egypt.





# PALM HILLS

## *projects*

### CAIRO EAST

- Palm Hills New Cairo
- Palm Hills Katameya
- Capital Gardens
- The Village
- Village Avenue
- Village Gardens
- Village Gate
- Palm Hills Katameya Ext.

### CAIRO WEST

- Palm Hills October
- Palm Hills Oct. Ext.
- Badya
- Bamboo Ext.
- Casa
- Palm Parks
- The Crown
- Woodville
- Palm Valley
- Golf Views
- Golf Ext.



## A WORD FROM THE *chairman*

“

As the Egyptian real estate market continues to flourish, the need for true added value, integrated communities has never been greater.

Recognizing this early on, Palm Hills Developments was fortunately able to take part of this exciting change in the real estate investment climate, to contribute in driving the country's economy forward.

Capitalizing on market opportunities by acquiring land in strategic locations and developing communities for a rapidly growing demand, Palm Hills Developments became a trend-setter for innovative, fully integrated communities, as an Egyptian developer. With one of the largest land banks in Egypt and a multitude of projects in residential, commercial and tourism destination resorts under its helm, Palm Hills Developments is growing with strong momentum; offering high standards of quality and a seamless livable experience.

As the result of a dynamic market, we are able to push our boundaries, develop and recreate better livable communities, and as a result, better living conditions for all. What has long set us apart is a deep commitment to innovation and an innate ability to tap into the needs and aspirations of our clients, offering the highest value and return on their properties.

At Palm Hills Developments, we believe that the core of our success stems from the belief that, by setting standards in quality, price and delivery, we will turn every integrated community into a success story, your success story.

”

*Yasseen Mansour*



# TLT LIVING

The Lemon Tree & Co. is progressively expanding into the hospitality and real estate industries, introducing **TLT Living** as a fundamental lifestyle pillar to the brand. In partnership with Palm Hills Developments, TLT Living presents its newest project - Le Sidi Cabanas, an extension to Le Sidi Boutique Hotel & Restaurant, offering you a unique living experience with functional luxury and simplicity together under one roof.







# HOME

*is where the sea is*

Prestigiously located at Hacienda Bay, Sidi Abd el Rahman in the North Coast, Le Sidi Cabanas capture the true essence of a North-African home; it is where comfort meets luxury and refined hospitality. Meticulously designed and fully furnished, Le Sidi Cabanas are hotel-serviced apartments, beautifully set across the golden coast of the Mediterranean, offering you an uncompromised lifestyle. Le Sidi's inspiration is deeply drawn from the roots of the Mediterranean and North-African cultures to complement the diverse tastes of our beloved home owners.

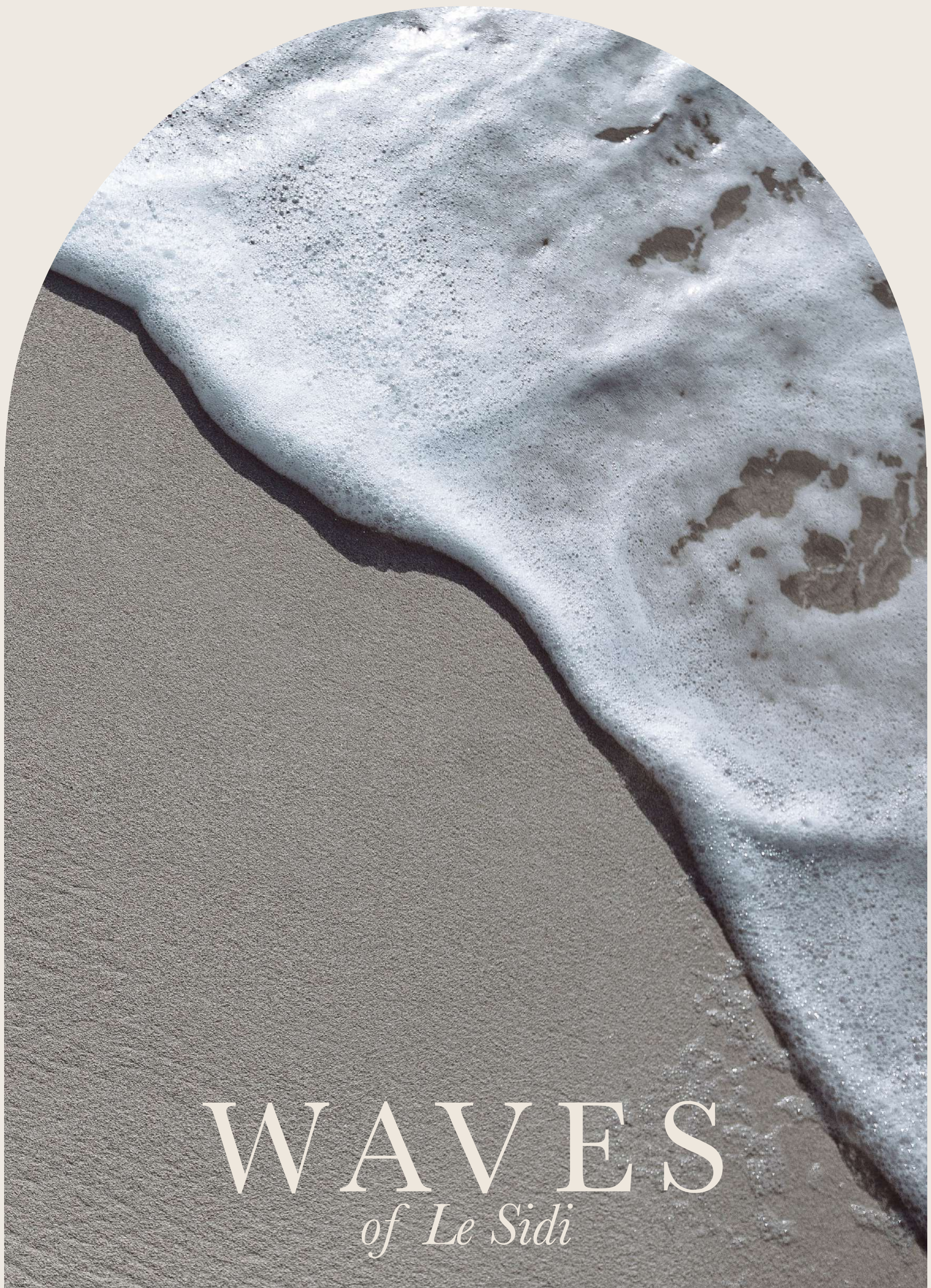




## *A locally-inspired* EXPERIENCE

Le Sidi Cabanas are designed to take you on a locally-inspired journey filled with authentic stories waiting to unfold at every turn. We take pride in honouring the notion of ‘Sidi’, a term of which was widely used in the 14th and 15th centuries in Egypt. By swaying soft tones of our serene earth, Le Sidi Cabanas’ design aesthetic is built on the concept of minimalism and authenticity with strong emphasis on local talented craftsmanship. The architectural look and feel embrace beautifully designed arches and earthly textures to suit those who appreciate and admire art.





Step your feet into the beautiful ivory sands of Hacienda Bay and enjoy the panoramic blue lagoon stretched out before you. Le Sidi Cabanas are situated on the exquisite coast of the Mediterranean, giving you the luxury of enjoying the glistening lagoon and the private Le Sidi Beach. Through a landscape of blues, salty air and soft sounds of the sea, our beach is seamlessly fit for couples, families or tranquil quality time with oneself.



*Le Sidi*  
 BOUTIQUE HÔTEL & RESTAURANT

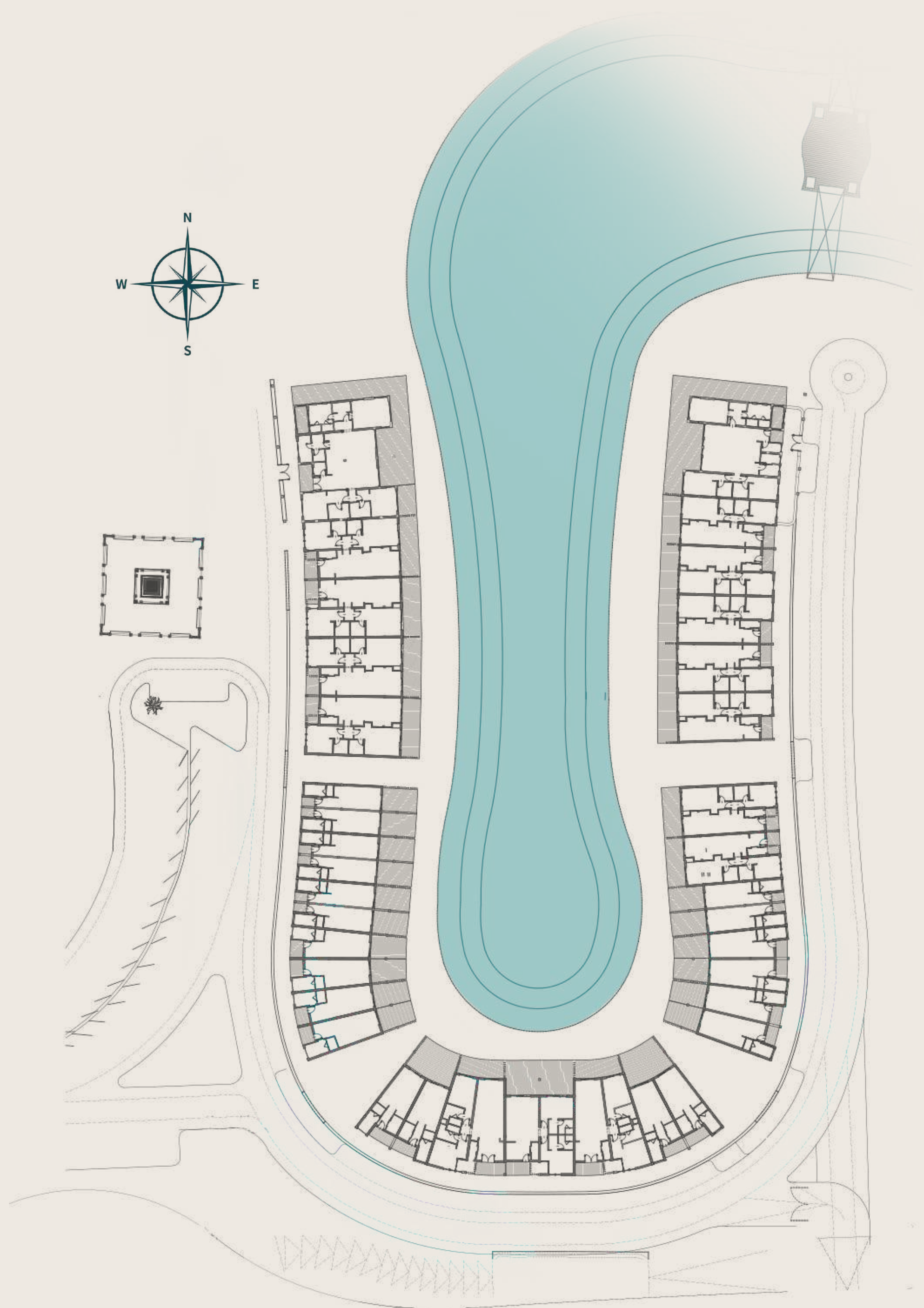
*Le Sidi*  
 CABANAS



# HACIENDA BAY

*masterplan*





# LE SIDI CABANAS

## *masterplan*

### DISCLAIMER

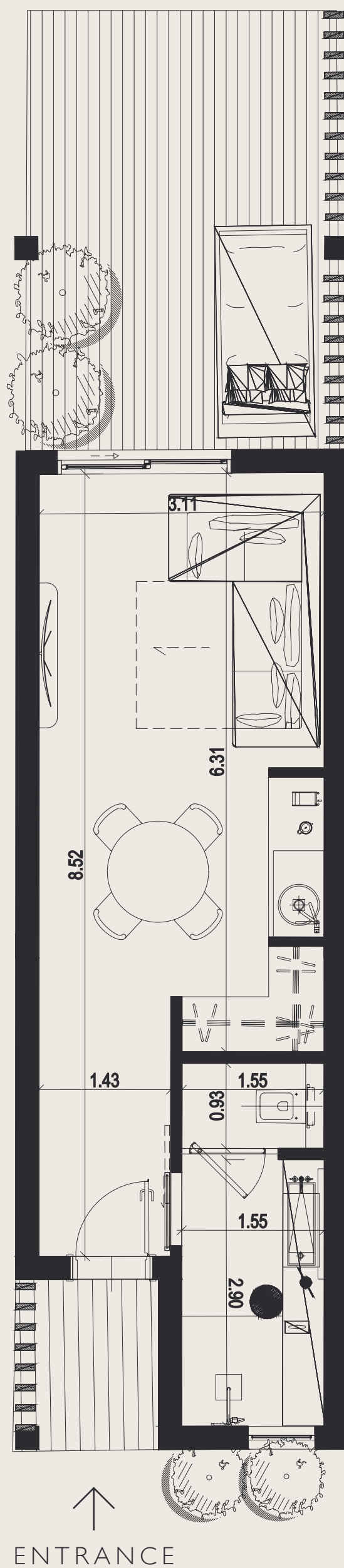
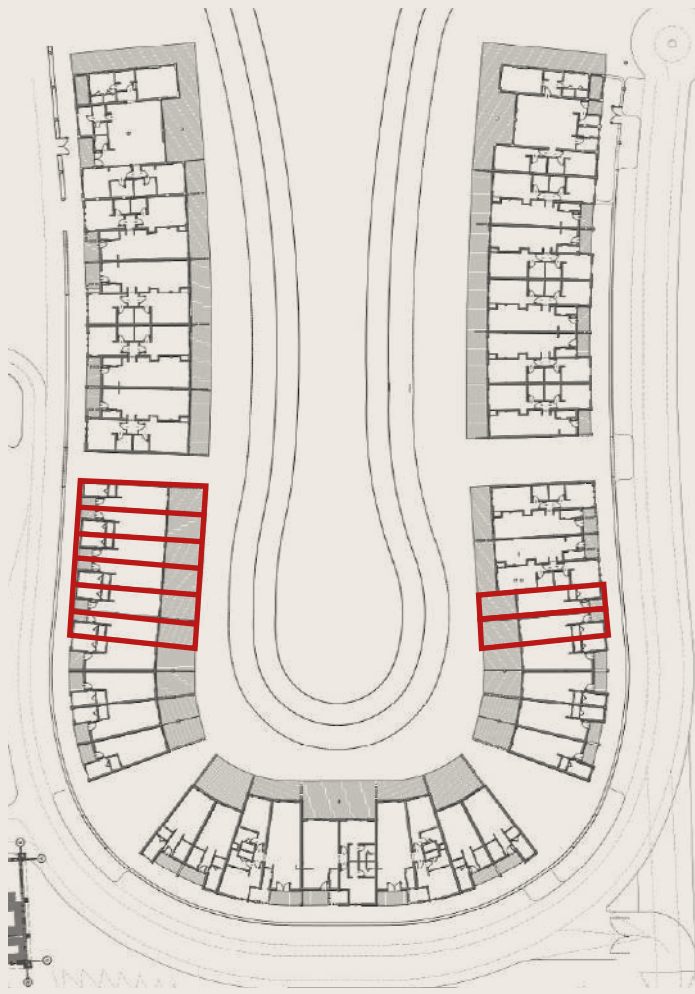
- All brochure picture references are generated through original content.
- Diagrams are not to scale and are for illustrative purposes only. Layout is for indicative purposes only and subject to change.
- Palm Hills reserves the right to make non-fundamental changes to the design provided herein.



*type 1*

# STUDIO STANDARD

AREA: 36m<sup>2</sup> | TERRACE: 16m<sup>2</sup>

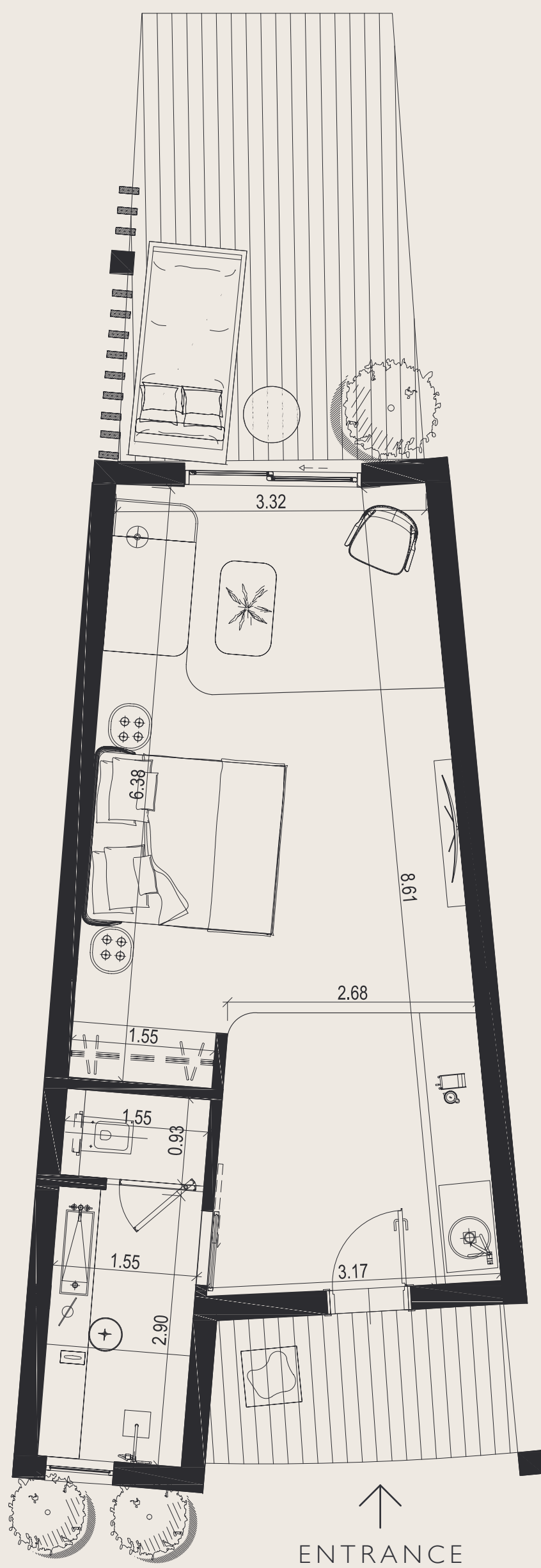
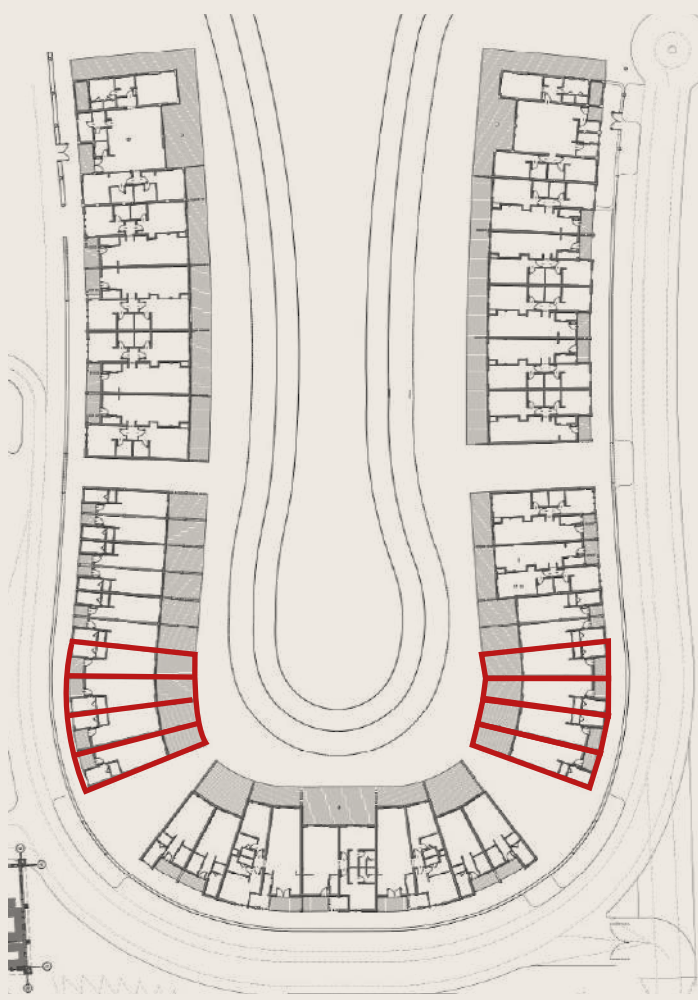




*type 1*

# STUDIO DELUXE

AREA: 41-43m<sup>2</sup> | TERRACE: 14m<sup>2</sup>

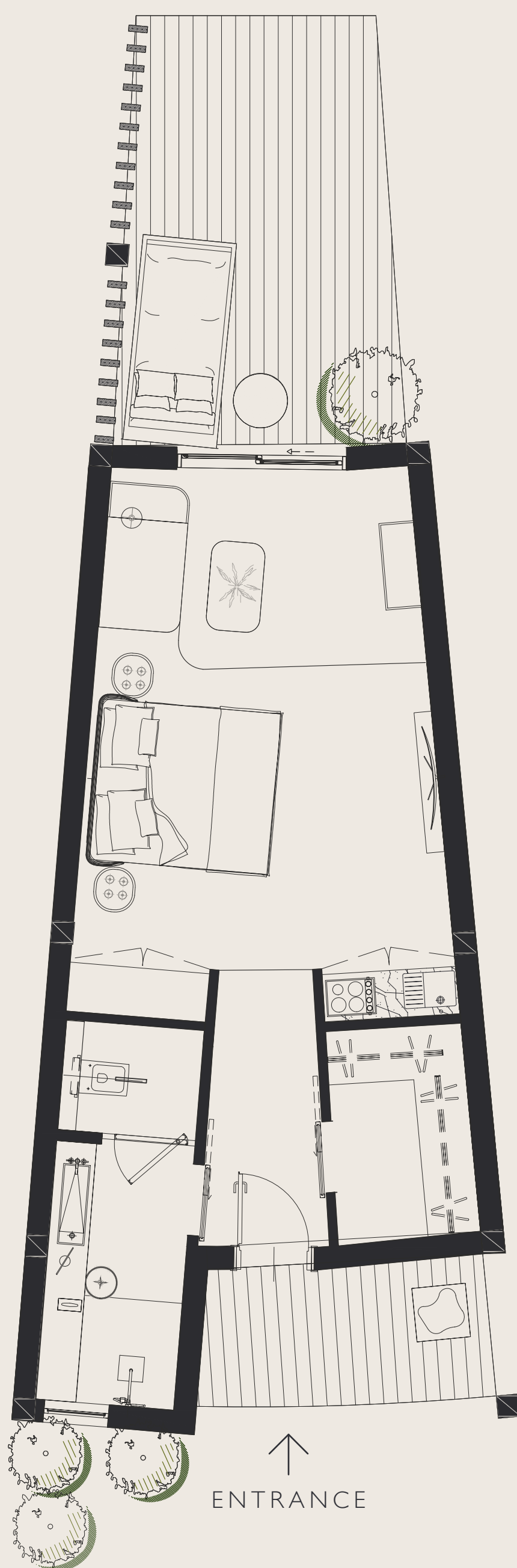
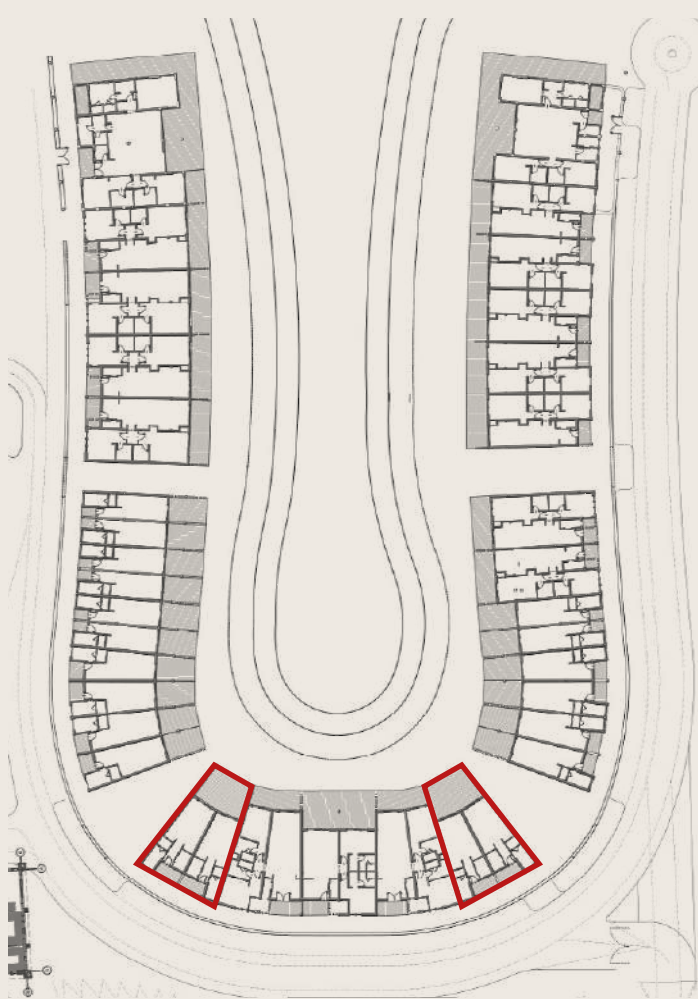




*type 1*

# STUDIO DELUXE II

AREA: 45m<sup>2</sup> - TERRACE: 14m<sup>2</sup>





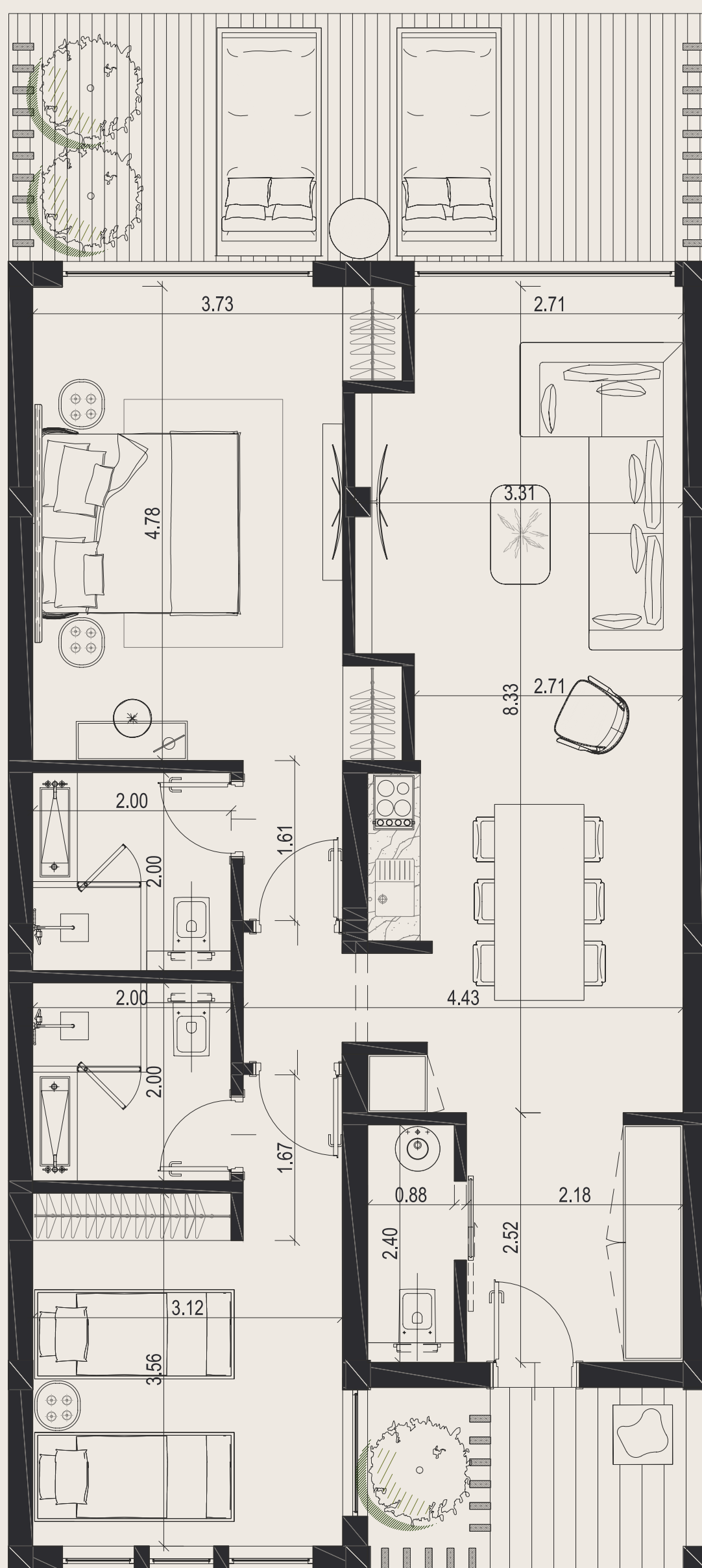
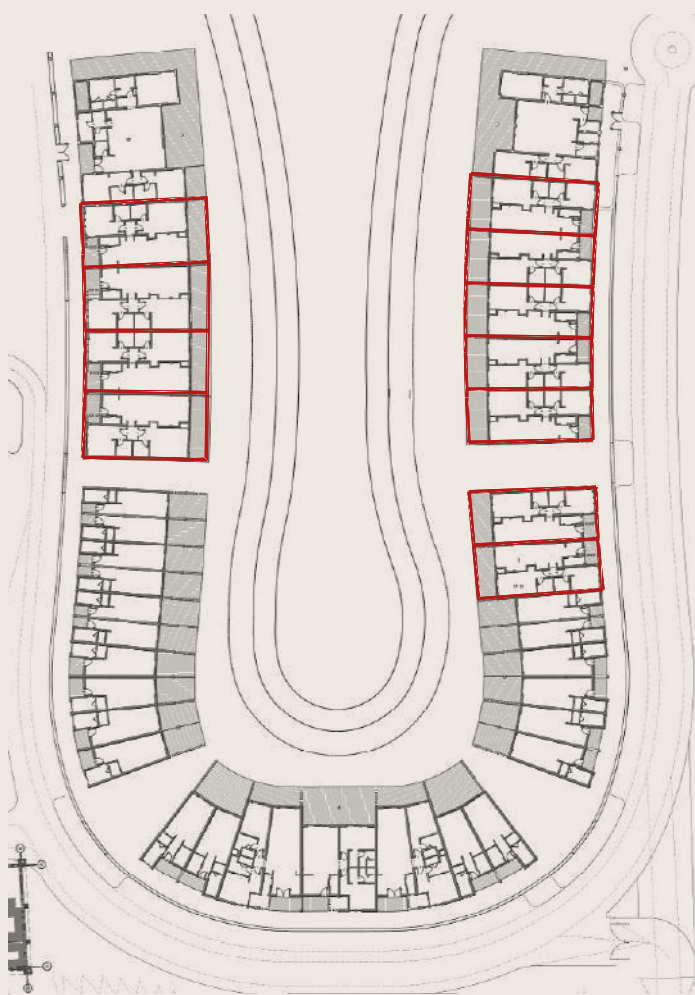




*type 2*

# STANDARD

AREA: 85-102m<sup>2</sup> | TERRACE: 17.6m<sup>2</sup>



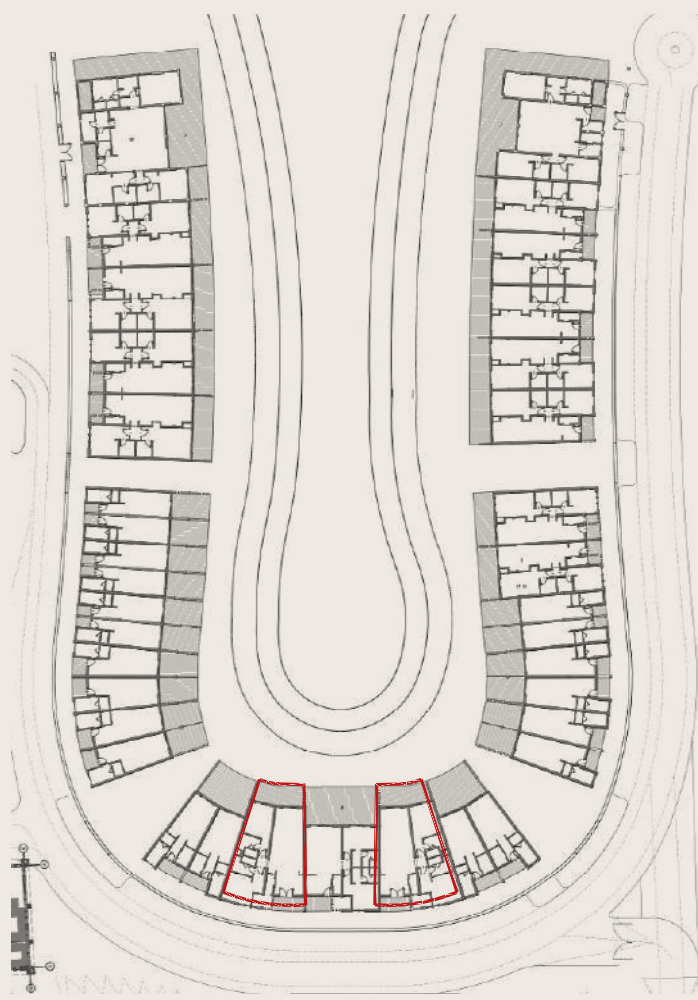
↑  
ENTRANCE



*type 2*

# DELUXE

AREA: 110m<sup>2</sup> | TERRACE: 25.5m<sup>2</sup>



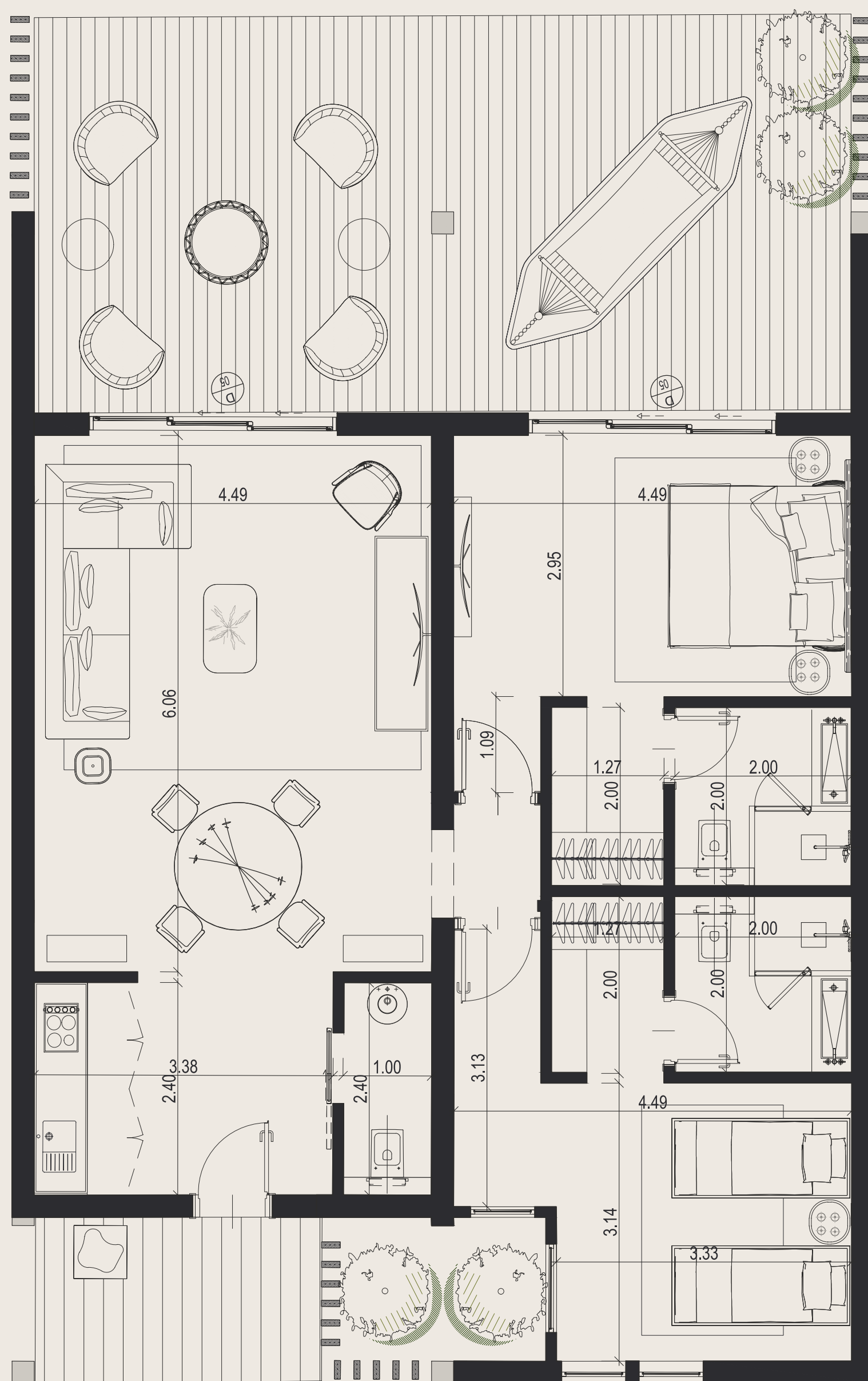
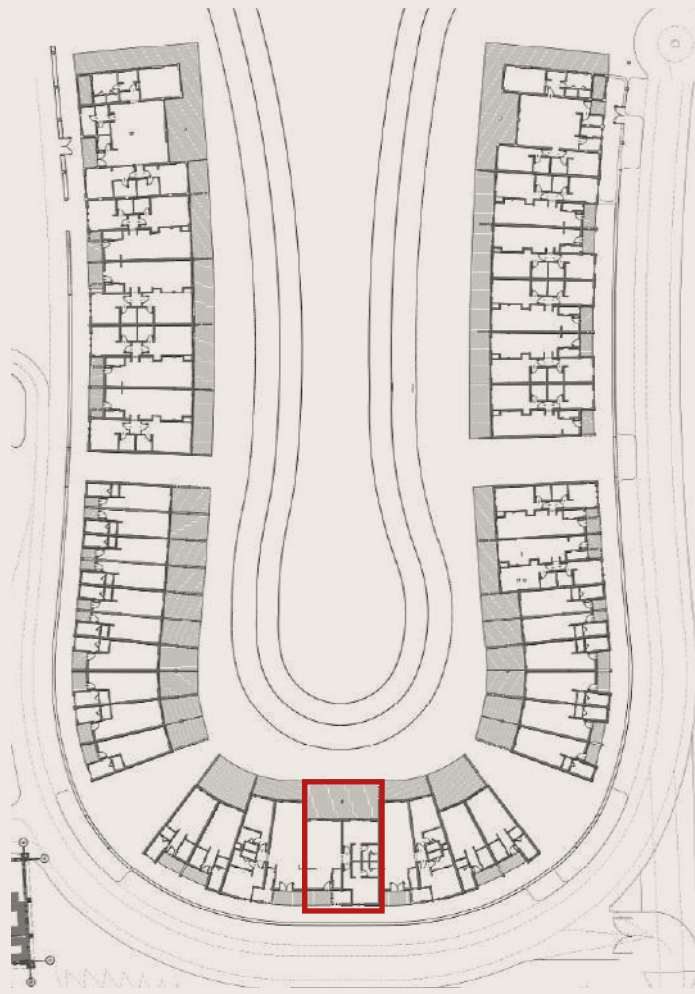
↑  
ENTRANCE



*type 2*

# DELUXE II

AREA: 119m<sup>2</sup> | TERRACE: 42m<sup>2</sup>



↑  
ENTRANCE



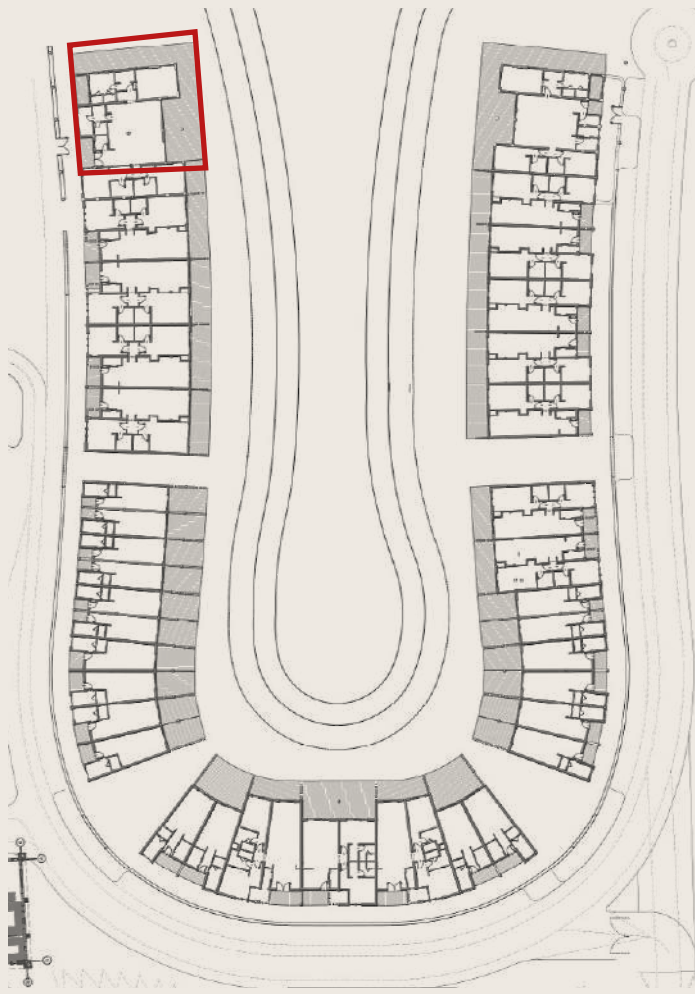




*type 3*

# VILLA I

AREA: 191m<sup>2</sup> | TERRACE: 59.8m<sup>2</sup>

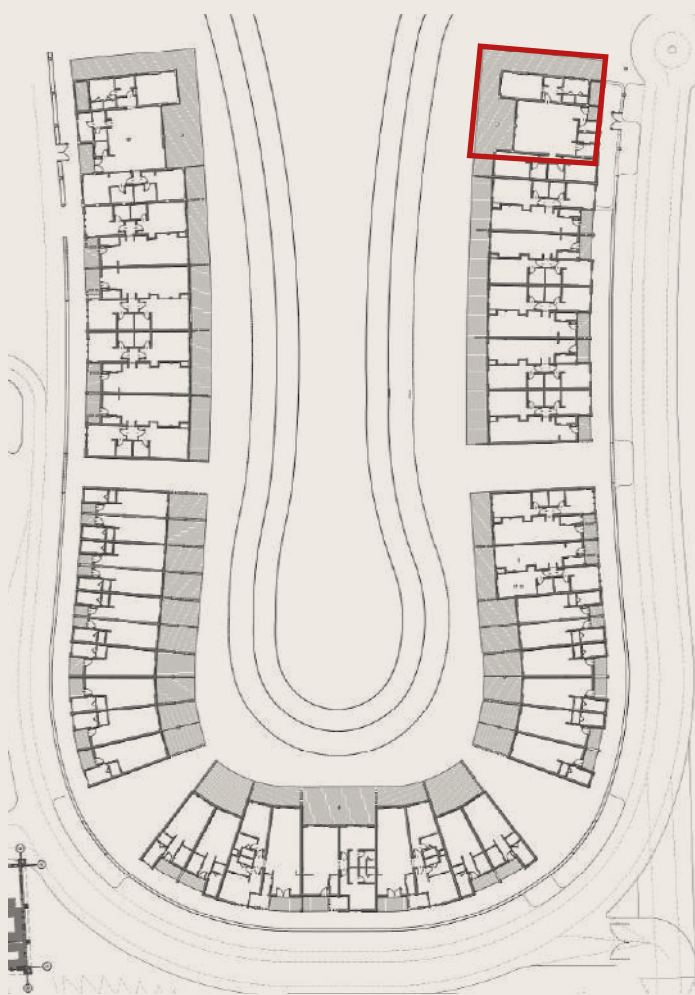




*type 3*

# VILLA II

AREA: 159m<sup>2</sup> | TERRACE: 59.8m<sup>2</sup>







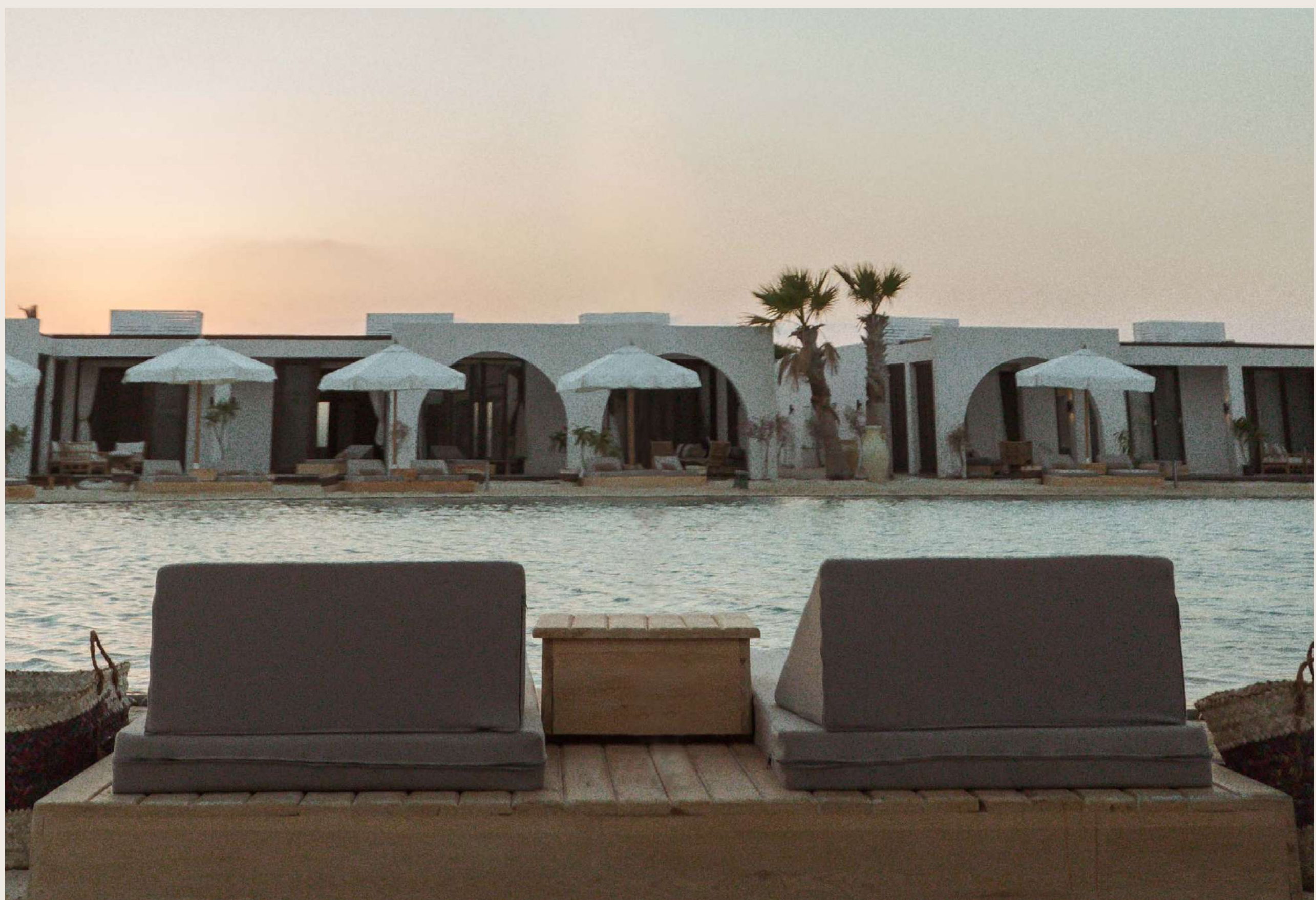


# *functional* LUXURIES

Bringing refined hospitality and functional luxury all the way to your very own Le Sidi Cabana. We ensure that every homeowner receives the service and attention required for a comfortable and lovely stay. Our extensive array of services include room service, house-keeping, laundry, maintenance and a number of IT Services in addition to high-speed cable WIFI. A safety-deposit box will also be available for your convenience. Each Le Sidi Cabana is tailored to suit the needs and preferences of our homeowners, creating an uncompromised experience on the golden coast of the Mediterranean.













# ROOTED

*in nature*





ARCHITECTURE DESIGN & CONSULTANCY

---







If interested, click below:  
<http://lesidicabanas.tlt.co.com>

@le.sidi  
[www.le-sidi.com](http://www.le-sidi.com)